



ADJUSTABLE STEEL CLEVIS HANGER
TYPE - 1



ADJUSTABLE STEEL BAND HANGER
TYPE - 7



STEEL TURNBUCKLE
TYPE - 13



TOP BEAM C-CLAMP
AS SHOWN OR INVERTED
TYPE - 19



TOP BEAM CLAMP
TYPE - 25



YOKE TYPE PIPE CLAMP
TYPE - 2



EXTENSION
RISER CLAMP
TYPE - 8



FORGED STEEL CLEVIS
TYPE - 14



CHANNEL CLAMP
TYPE - 20



PIPE CLIP
TYPE - 26



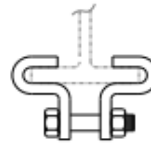
CARBON OR ALLOY STEEL
THREE BOLT PIPE CLAMP
TYPE - 3



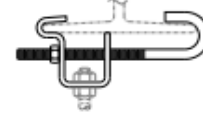
ADJUSTABLE BAND HANGER
TYPE - 9



SWIVEL TURNBUCKLE
TYPE - 15



CENTER BEAM CLAMP
TYPE - 21



SIDE BEAM CLAMP
TYPE - 27



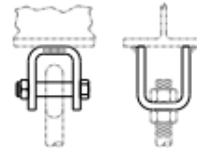
STEEL PIPE CLAMP
TYPE - 4



ADJ. SWIVEL RING BAND
HANGER
TYPE - 10



MALLEABLE IRON SOCKET
TYPE - 16



WELDED BEAM ATTACHMENT
WITH OR WITHOUT BOLT
TYPE - 22



STEEL BEAM CLAMP
W / EYE NUT
TYPE - 28



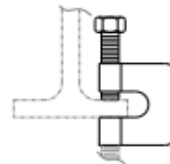
J - HANGER
TYPE - 5



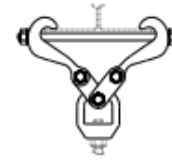
SPLIT PIPE RING WITH OR
WITHOUT TURNBUCKLE
TYPE - 11



STEEL WELDLESS EYENUT
TYPE - 17



C - CLAMP
TYPE - 23



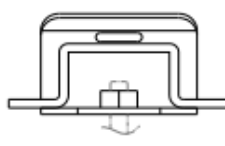
LINKED STEEL CLAMP
WITH EYE NUT
TYPE - 29



ADJUSTABLE SWIVEL PIPE
RING SPLIT RING OR SOLID
RING TYPE
TYPE - 6



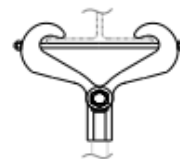
EXTENSION SPLIT PIPE
CLAMP HINGED OR TWO
BOLT
TYPE - 12



STEEL OR MALLEABLE
CONCRETE INSERT
TYPE - 18



U - BOLT
TYPE - 24



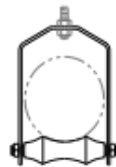
MALLEABLE BEAM CLAMP
W / EXTENSION PIECE
TYPE - 30



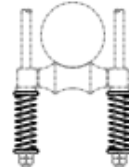
LIGHT WELDED
STEEL BRACKET
TYPE - 31



PIPE STANCHION SADDLE
TYPE - 37



ADJUSTABLE ROLLER
HANGER W / OR W / O SWIVEL
TYPE - 43



SPRING CUSHION ROLL
TYPE - 49



VERTICAL CONSTANT
SUPPORT HANGER
TYPE - 55

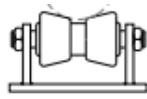




MEDIUM WELDED
STEEL BRACKET
TYPE - 32



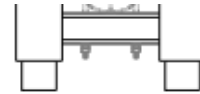
ADJUSTABLE PIPE SADDLE
SUPPORT
TYPE - 38



PIPE ROLL COMPLETE
TYPE - 44



SPRING SWAY BRACE
TYPE - 50



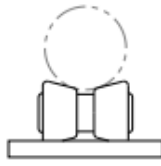
TRAPEZE CONSTANT
SUPPORT HANGER
TYPE - 56



HEAVY WELDED
STEEL BRACKET
TYPE - 33



STEEL PIPE COVERING
PROTECTIVE SADDLE
TYPE - 39



PIPE ROLL AND PLATE
TYPE - 45



VARIABLE SPRING HANGER
TYPE - 51

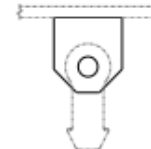
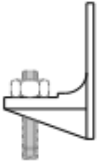


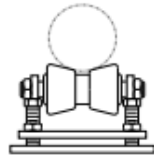
PLATE LUG
TYPE - 57



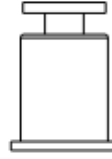
SIDE BEAM BRACKET
TYPE - 34



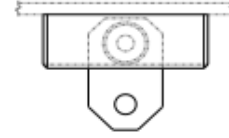
PROTECTION SHIELD
TYPE - 40



ADJUSTABLE PIPE ROLL
AND BASE
TYPE - 46



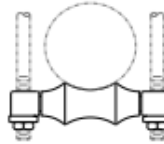
VARIABLE SPRING
BASE SUPPORT
TYPE - 52



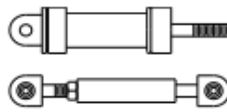
HORIZONTAL TRAVELER
TYPE - 58



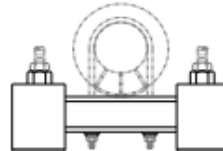
PIPE SLIDE & SLIDE PLATE
TYPE - 35



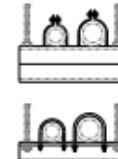
SINGLE PIPE ROLL
TYPE - 41



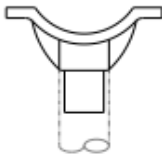
RESTRAINT CONTROL
DEVICE
TYPE - 47



VARIABLE SPRING
TRAPEZE HANGER
TYPE - 53



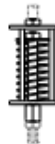
TRAPEZE HANGER
TYPE - 59



PIPE SADDLE SUPPORT
TYPE - 36



CARBON OR ALLOY STEEL
RISER CLAMP
TYPE - 42



SPRING CUSHION
TYPE - 48



HORIZONTAL CONSTANT
SUPPORT HANGER
TYPE - 54